

HERITAGE of LONDON TRUST

NEWSLETTER: Autumn 2009

News from the Office

We never stop trying to highlight the most desperate restoration projects across London – with this in mind Diana arranged a tour of projects for Ed Vaizey MP, Shadow Minister for Culture and one of our newest Board members on July 2nd. Along with HOLT OP director Laura Norris, and Trustees Ronnie Barden and Nicholas Bell, Ed went to see 549 Lordship Lane (Southwark), St George's Chapel Woolwich, the Spotted Dog (Newham) and St John on Bethnal Green (Tower Hamlets). All these buildings are currently "at risk" or in desperate need of restoration. 549 Lordship Lane, a rare concrete house designed by Charles Barry Jnr and built in 1873, has recently been the subject of a compulsory purchase order by Southwark Council after the owner vandalised the house in an attempt to get it demolished for re-development.



Ed Vaizey (centre) at St George's Chapel

This visit was an opportunity for Mr Vaizey to learn more about the work HOLT is doing, but was also a chance to meet up with partners from EH and the boroughs with whom we are working to find long-term solutions for these projects. Diana took English Heritage's new chairman Baroness Kay Andrews and a host of officials from the Mayor's Office, Heritage Lottery Fund and local councils on a similar tour of projects on October 15th. With so many people in local government keen to see these buildings it will hopefully not be long until we have some happy endings to these projects in peril!

Christopher Catling will be joining HOLT for the next 6 months to undertake a survey and assessment of public monuments in Tower Hamlets as part of a joint English Heritage/HOLT pilot project. Christopher was one of the founders of the charity Heritage Link, and writes on conservation matters for *Country Life* and *Current Archaeology*. He is also the author of best-selling guides to Florence and Venice. We look forward to working with him closely over the coming months.

The office will be moving before Christmas. Our new home will be 34 Grosvenor Gardens, SW1W 0DH. HOLT OP Director Laura Norris hopes to move in with us, and we expect to be settled in by the New Year.

Strawberry Hill Restoration

Grade I listed Strawberry Hill was built by Horace Walpole between 1747 and 1792 with the assistance of John Chute and Richard Bentley, who together called themselves the "Committee of Taste". They took inspiration from a variety of sources, including Henry VII's chapel in Westminster Abbey, to create one of Britain's most iconic and eclectic buildings.



Re-installing the restored weathervane

After many years in use as part of the adjoining school, it is now in the care of the Strawberry Hill Trust, founded in 2002 to oversee restoration. The £8.2 million restoration scheme, supported by a £4.6 million grant from

the Heritage Lottery Fund, as well as substantial support from English Heritage, the Architectural Heritage Fund and the World Monuments Fund Britain, is currently under way.

On Thursday, September 10th, Diana and Tara were at Strawberry Hill to hand over a cheque for £3,500 to Strawberry Hill Trust Chairman Michael Snodin. This paid for restoring and re-gilding the weathervane. Decorated with strawberry and vine leaves, the exquisite 19th century weathervane was re-installed atop the Beauclerk Tower to much fanfare from an assembled crowd of historians, conservators and donors who had come to see firsthand how the restoration programme is progressing.

Conservation architects Inskip & Jenkins, project managers Fanshawe LLP and building contractors E. Bowman & Sons Lts are overseeing the works. The Friends of Heritage of London Trust have been promised a guided tour of the building when the restoration is completed in the summer of 2010.

Society of Friends & Events

For the 2nd year, HOLT sponsored runners in the Asics 10K London run on July 12th. As the 26,000 runners slowly wound their way up to the starting line at Hyde Park Corner the sun came out and it turned into a glorious morning.



Sorrel Comley & Jonathan Basher post-race

Edward Stumm, Johanna Gibbons, Sorrel Comley and Jonathan Basher ran on our behalf and raised over £600 in donations. We will have 6 places for next year's race on July 11th, 2010, so if you'd like to take part next year, please contact Tara in the office.

The Friends enjoyed an informative walk around Shadwell on September 16th in the company of Steve Pilcher of the Historic Chapels Trust.

Steve has invited all the Friends for carols, glüweïn and stollen at St George's German Lutheran Church, Alie Street, Aldgate on December 9th at 6:30pm. Tickets are £5 on the door. For further details please contact the Historic Chapels Trust (020 7481 0533). Unfortunately, due to our impending office move, the Shoreditch walk on November 25th has been cancelled—we will re-arrange this for April 2010.

We hope to offer an exciting series of events and lectures in 2010, including a guided tour of Charlton House, visits to Strawberry Hill and Hoare's Bank, and a lecture on historic Woolwich. A list of events will be sent out early in 2010.

Projects Offered Grants

At our Trustees meeting on October 13th, 2009, 8 new projects were approved for grants totalling over £21,000. Details of these projects are listed below.

St Margaret Pattens, Rood Lane, Eastcheap. City of London. 1684-7 by Christopher Wren. Grade I

There has been a church dedicated to St Margaret of Antioch on this site since at least the 12th century. The present church, built by Sir Christopher Wren, replaces one from the 1530s, destroyed in the great fire. It was designated a guild church in 1954 and has close ties with both the Pattenmakers and the Basketmakers. The church hosts many groups and events, including concerts, yoga classes and AA groups. They plan to refurbish a room in the tower, reached by a beautiful circular stone staircase, for use as a meeting space. This room contains a large Benefactor's Board dating from the 17th century. The wood has suffered from water damage. It is estimated that the refurbishment of the tower room will cost £29,500, while the conservation of the Benefactor's Board will be an additional £8,500. The Trustees have offered a grant of £2,000 for conserving the Benefactor's Board.



88 Dean Street, Soho. Westminster. Shop-front, c.1791. Grade II*

This project came before the Trust in the late 1980s, but the grant we offered (£500) then was never taken up. David Bieda of the Soho Society has now suggested we offer a small grant



towards paint analysis and investigative work which will bring out the decoration on the fascia. It is very fragile and one of only a handful of shop-fronts of the period to survive relatively unaltered in Westminster. The fan light above the doorway to the flats is another problem which will need careful conservation. As this is

such a wonderful and rare example of an 18th century shop-front, the Trustees have offered £500 towards the investigation. We may be asked to help again with the actual conservation work once the preliminaries have been completed.

St. Matthew's Church, St. Matthew's Row, Bethnal Green. Tower Hamlets. 1743-6 by George Dance, with later alterations. Grade II*

Construction of this brick and stone church was begun in 1743. A fire in 1859 destroyed the interiors, and it was only re-opened in



December 1861, before bombing in 1940 left St. Matthew's a roofless shell. Post-war refurbishment was undertaken by J. Anthony Lewis in 1959-61, and the church was re-consecrated on 15th July 1961. St Matthew's houses an impressive array of post-war art works, including relief's of the *Stations of the*

Cross by Don Potter, who studied under Eric Gill. They currently need to restore the tower clock, added in 1861. Although regularly serviced, it requires internal reconditioning and re-gilding. This work must take place in situ. The church hopes to undertake the work when repair work begins on the Tower, for which they hope to receive a grant from English Heritage. The Trust

has offered a grant of £3,500, which should cover the cost of restoring the clock.

Landmark Arts Centre, Ferry Road, Teddington. Richmond. 1880. Grade II*

This former church has become a lively arts centre with a full programme of events, regular arts and music groups and classes. They manage to run the centre without any Borough or public funding support. The church building became seriously at risk in the 1980s and was rescued after a local campaign and public enquiry. Stained glass has been retained as well as many original features that survived the vandalism. They currently want to restore the marble floor of the chancel, which has become damaged and degraded. Its condition makes it a hazard for visitors. In the most dangerous areas, a light concrete

mortar mix has been inserted. They now plan to remove the temporary concrete infill, cut out damaged sections of marble, insert new marble to match the



colour, profile and pattern of the original and then to clean and seal the whole floor. The estimate for this work is £3,760.50 including VAT. The Trust has offered a grant of £3,000 towards this.

St Martin in the Fields, Trafalgar Square. Westminster. Re-installation of Memorials and Monuments in Crypt (various dates).

Church 1721-6, by James Gibbs. Grade I

Gibbs' iconic church has become one of London's best known landmarks. The church has had a long history of providing services for local people and the homeless, as well as a strong reputation as a centre for music, concerts and recitals. In 2006 St Martin's began a £36 million programme to restore the church and

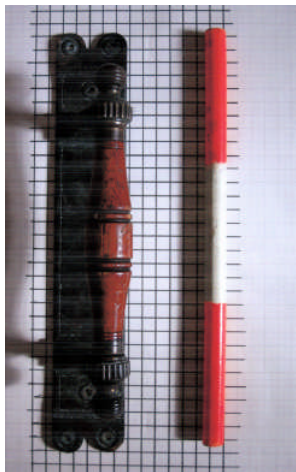


expand its community services and facilities. In 2007 HOLT gave £2,350 towards restoring the railings. Much of the work is now complete, and

the new facilities open. There are still minor projects to finish, including the re-installation of 52 memorial plaques and monuments in the Crypt. Some of these date back to the mid 16th century. These have been stored by off-site by Conservators Taylor Pearce during the renewal works. They will be placed in a walkway around the south-western end of the art gallery to create a "Memorials Gallery". There will be new lighting and interpretation panels to explain the history of St Martin's and the memorials. The mounts will consist of stainless steel fixings and damp proof membranes. Total cost is estimated at £19,500 (approximately £650 for large, £350 for medium, and £150 for small memorials). The Leche Trust have pledged £3,000 towards this. The Trust has offered £1,300 which will cover the re-instatement of 2 large memorials.

Union Chapel, Compton Terrace. Islington. 1874-77 by James Cubitt and Sidney Young, with later additions 1877-90. Grade II*

Cubitt & Young's vast building replaced a smaller chapel that had stood in Compton Terrace since 1806. The Friends of Union Chapel were set up in 1982 to protect the chapel and oversee its restoration. Although the building continues to be used for religious services, since 1991 it has become a successful concert venue.



The most recent conservation project here was the £1.1 million restoration of the tower – HOLT gave £4,165 for the stone finials on the roof in 2006 and £7,500 (courtesy of NatWest) for decorative joinery in 1994. In recent years it has been noticed that some of the smaller fixtures, including fine wood and brass door handles, have gone missing or been damaged. 10 of the wood spindle and brass

door handles have been lost and will need to be reproduced from a mould, while 48 original handles will also need to be re-fixed using new non-return screws which will hopefully put a stop to any pilfering. The estimate for this work is £4,200. The Union Chapel have £1,500 set aside. HOLT has agreed to offer a grant of £2,700 to ensure this work goes ahead swiftly.

Valence House, Beacontree Avenue. Barking and Dagenham. Grade II*

The house has been in Council ownership since the 1920s. Problems with water ingress, poor ventilation and timber decay have recently been addressed and roofing works have been carried out. As part of £4.22 million HLF project that will



see it used as a Museum of Local History. During the restoration they discovered panelling in the south wing of high quality oak from the 1720s in a poor state. £50,000 was made available for this to be repaired and re-polished. However in some areas the panelling required more comprehensive repair and re-backing. They need a further

£4,760 to complete the works. This would include removing the modern painted skirting board and replacing sections of oak cornicing and panelling that have been lost. The Trust has offered a grant of £4,760 to cover this.

St John's Tavern, 91 Junction Road, Archway. Islington. Conservation area (locally listed).

This tavern was built in the 1880s and is a fine example of a brewery tavern. In the 1950s stuccowork, chimneys and original joinery were removed from the building, possibly as part of repairs after bomb damage. Islington Council and English Heritage believe the building should be restored to its former state and a



grant of £265,000 has been approved through the Junction Road PSICA. The current owners would also like to put back large lanterns which can be seen in a photograph of the building taken c.1910, but this is not covered by the PSICA grant. The lanterns will cost £14,000, and will greatly enhance the tavern's corner site and the overall street scheme. In light of the threat to historic pubs all over the country, and to enhance the restoration scheme being supported by EH and Islington Council, HOLT has offered a grant of £4,000 towards the lanterns.